

# SE775GH5



Product Family	Hob
Built-in type	Traditional
Dimensions	70/75 cm
Power supply	Gas
Type	Gas
EAN code	8017709150297



## Aesthetics



Aesthetic	Classica
Colour	Stainless steel
Finishing	Satin
Material	Stainless Steel
Type of steel	Brushed
Pan stands	Cast iron
Burners	Smeg Contemporary
Burners Material	Alluminium
Type of control setting	Control knobs
Control knob position	Front
No. of controls	6
Controls colour	Silver
Serigraphy colour	Black

## Programme / Functions

Total no. of cook zones	5
No. of gas cook zones	5

## Options



Worktop Cut-Out	478-482x555-560 mm
-----------------	--------------------

## Technical Features

UR

Left - Gas - 2UR (dual) - 3.90 kW  
 Rear-centre - Gas - AUX - 1.10 kW  
 Front-centre - Gas - AUX - 1.10 kW  
 Rear-right - Gas - Rapid - 2.60 kW  
 Front-right - Gas - Semi Rapid - 1.70 kW  
 Gas - Semi Rapid

Gas safety valves	Yes	Automatic Ignition	Yes
-------------------	-----	--------------------	-----

## Accessories Included

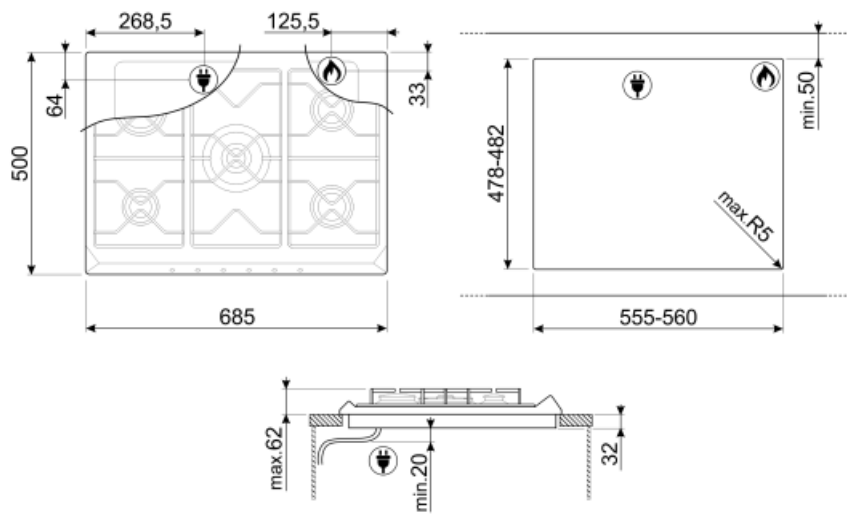
Pan reducer/Moka stand 1

## Electrical Connection

Electrical connection rating (W)	1 W	Frequency (Hz)	50/60 Hz
Voltage (V)	220-240 V	Power supply cable length	120 cm

## Gas Connection

Gas Type	G20 Natural gas	Other gas connections provided	Conical
Gas connection	Cilindrical	Gas connection rating (W)	11200 W
Other gas nozzles included	G30 GPL Liquid gas		



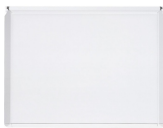
## Not included accessories



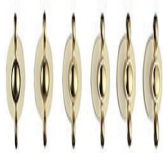
**BB3679**  
Cast Iron griddle



**GRW**  
Wok support



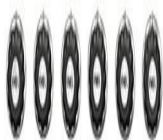
**C70CEB/1**  
White cover suitable for 70 cm hobs with frontal controls.



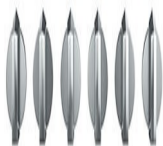
**6MP800P**



**C70CP/1**  
Cream cover suitable for 70 cm hobs with frontal controls.



**6MP700AX**  
Hob knobs set - Cortina Anthracite/Silver



**6MPF2465X**  
Hob knobs set - Selezione



**6MP700PO**  
Hob knobs set - Cortina Cream/Old brass



**6MP700BS**  
Hob knobs set - Cortina Silver/Silver



**C70CA/1**  
Anthracite cover suitable for 70 cm hobs with frontal controls.



**WOKGHU**  
Cast iron WOK Support



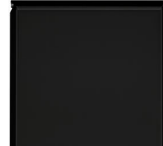
**GRM**  
Coffee machine support



**C70CX/1**  
Glass cover with stainless steel frame suitable for 70 cm hobs with frontal controls.



**TPK**  
Stainless steel grill plate to cook Teppanyaki dishes



**C70CNE-2**  
Black cover suitable for 70 cm hobs with frontal controls.



**6MP700AO**  
Hob knobs set - Cortina Anthracite/Old brass

## Symbols glossary (TT)

---

- |  |  |   |   |
|--|--|---|---|
|  | Standard installation: Traditional installation in tabletop, suitable for any kitchen sets |  | Heavy duty cast iron pan stands: for maximum stability and strength.        |
|  | CUT_OUT_STANDARD_72dpi   |  | Ultra rapid burners: Powerful ultra rapid burners offer up to 5kw of power. |
|  | Knobs control  |   |   |